

# THE REAL CHALLENGE WITH PERSONAL DATA PROCESSING

ISACA RISK EVENT – 19 APRIL 2018

# INTRODUCING PROTIVITI



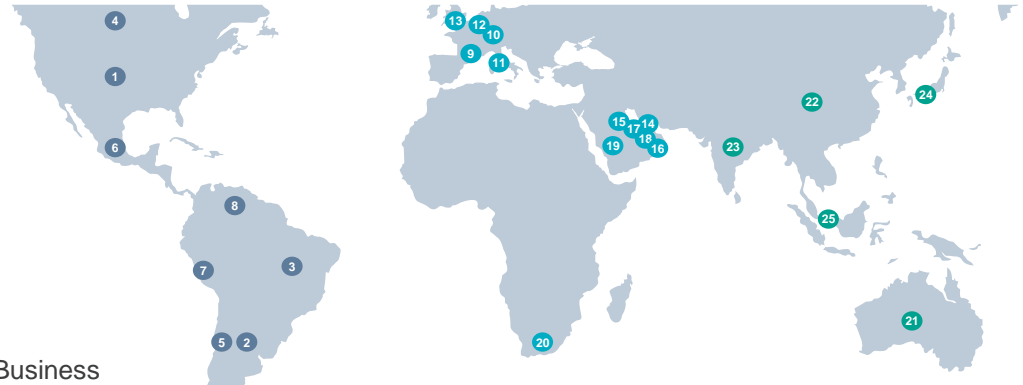
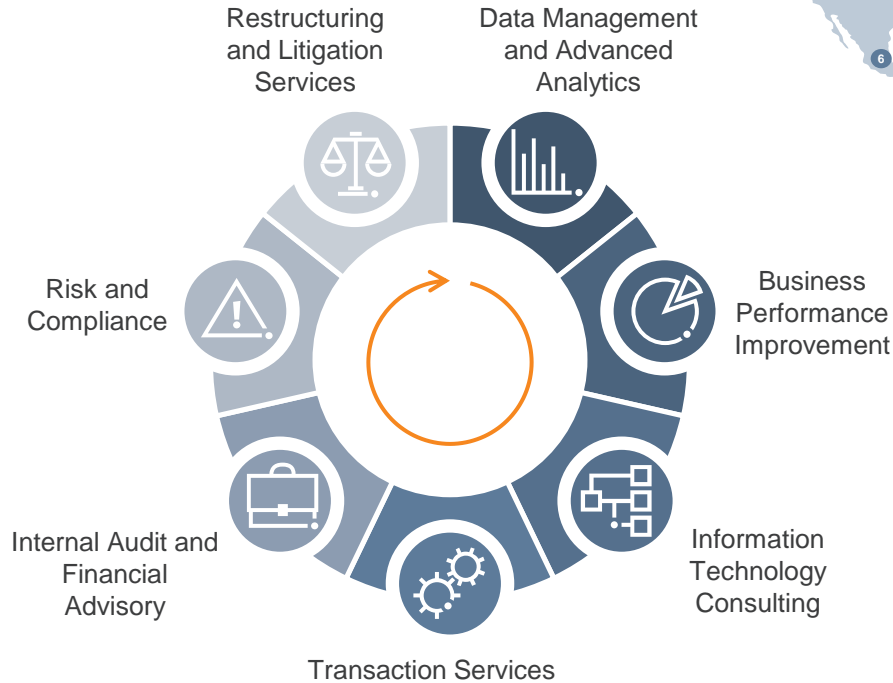
Tjakko de Boer



Marcel Koers

**About the presenters**

# INTRODUCING PROTIVITI



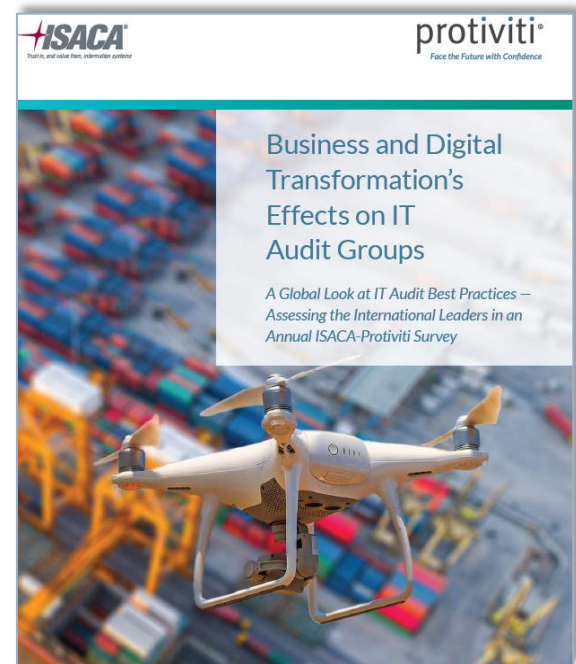
**Protiviti services and global footprint**

# INTRODUCING PROTIVITI

## Protiviti is Partner of ISACA

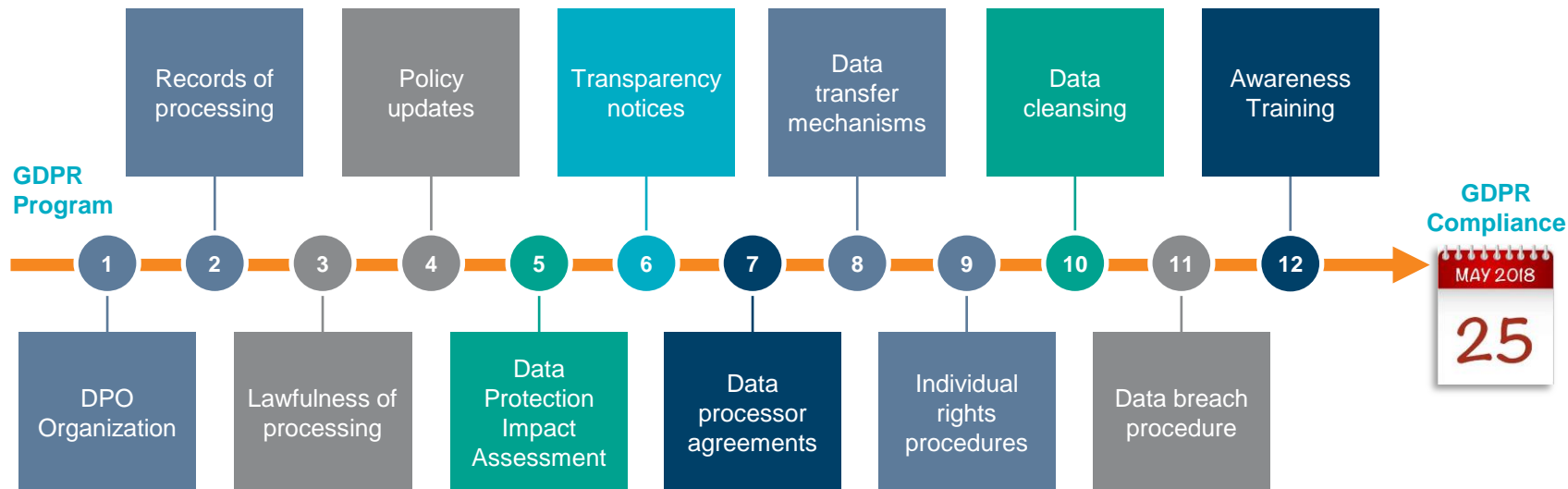
### *IT audit benchmarking survey*

- Privacy, data and security are shaping IT audit plans
- Increase of designated IT audit directors
- IT audit professionals should strengthen collaboration with IT compliance groups
- IT audit involvement is necessary in entire IT implementation lifecycle
- Organisations are starting to co-source the IT audit function as workload increases



<https://www.protiviti.com/US-en/insights/it-audit-benchmarking-survey>

# ROAD TO GDPR COMPLIANCE



# CHALLENGES AFTER MAY 25<sup>TH</sup> 2018

## Potential root causes of Complaints and Breaches



... no clarity on “appropriate organizational and technical measures”



... inability to adapt to change and demonstrate compliance



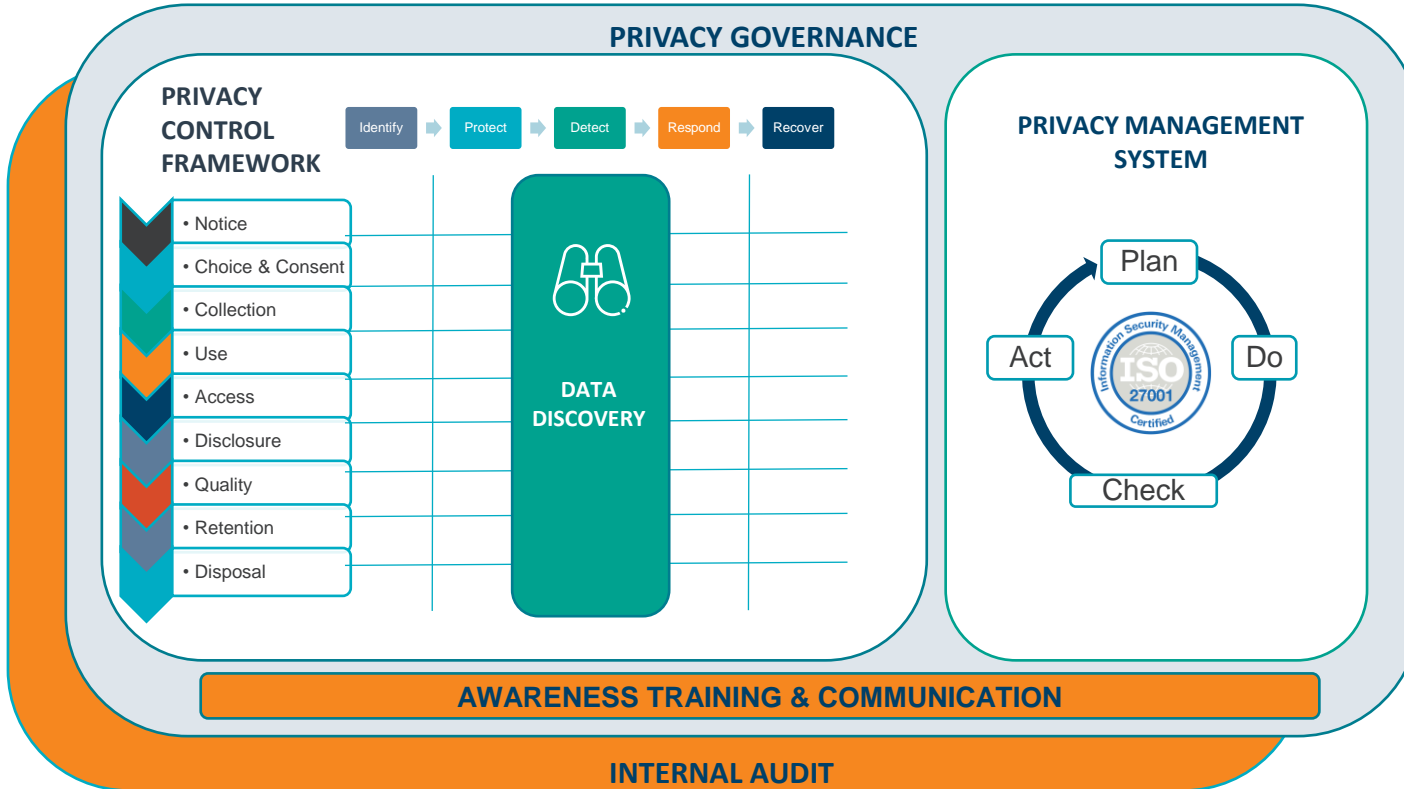
... lack of personnel awareness on data processing requirements



... no visibility on unstructured data

# RESPONSE TO THE CHALLENGES

- ... no clarity on "appropriate organizational and technical measures"
- ... inability to adapt to change and demonstrate compliance
- ... lack of personnel awareness on data processing requirements
- ... no visibility on unstructured data



# UNSTRUCTURED DATA

## Structured

- Organized
- Formatted
- Normalized
- Annotated
- Standard processing
- Controlled
- Secured

Exchange

## Unstructured

- Text-heavy
- File-based
- Many formats
- Not normalized
- Not annotated
- End-user computing
- Uncontrolled
- Not secured

## Business application



Managing the footprint of personal data

## Dark Data



Fileshares



Sharepoint



Mail



Endpoints



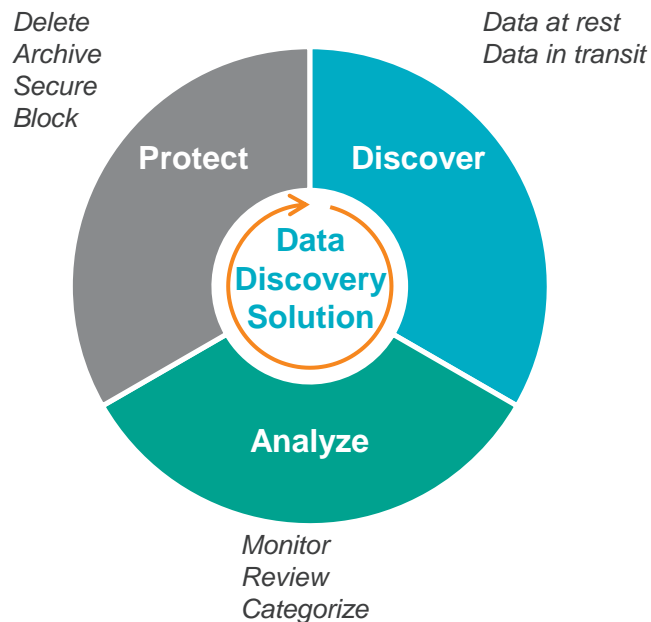
Cloud solutions



## The real challenge with personal Data processing is unstructured data

- 
- UNSTRUCTURED DATA
- Other words in the cloud include: INFORMATION, OBJECTS, SERVICES, INTERPRET, STRUCTURE, PAGE, NONETHELESS, ESTIMATED, DOCUMENT, SEMANTIC, AUTOMATED, UNANTICIPATED, RENDERING, ANALOG, IMPRECISE, FACILITATE, RECORDS, DATABASES, OFFERING, MANAGEMENT, ORIGINATES, COLLECTIVELY, FINDING, VISUAL, CITED, ACCEPTED, TABLES, TAGGING, PATTERNS, EXPLOITS, SYNTAX, EXTRACT, AUDIO, ESTIMATES, CARBON, ELEC, ELECTRONIC, SENTENCE, MANIPULATION, CHANGES, COLLECTIONS, BUSINESS, TAGGED, FILES, IRREGULARITIES, IMPLICIT, AMBIGUITIES, UNMANAGED, ENRICHED, AUDITORY, JOURNALS, SOLUTIONS, UNSTRUCTURED, RELATIONAL, ANALYSTS, REFERS, INVOLVE, POTENTIALLY, ANALYZING, DISCOVERY, FRAMEWORK, STORED, USABLE, TEXT, ANNOTATED, ANALYTICS, CATEGORIZE, WAYS, MORPHOLOGY, ORGANIZATIONS, PACKAGED, FIELD, CONTENT, MANUALLY, INFORMATION, OBJECTS, SERVICES, INTERPRET, STRUCTURE, PAGE, NONETHELESS, ESTIMATED, DOCUMENT, SEMANTIC, AUTOMATED, UNANTICIPATED, RENDERING, ANALOG, IMPRECISE, FACILITATE, RECORDS, DATABASES, OFFERING, MANAGEMENT, ORIGINATES, COLLECTIVELY, FINDING, VISUAL, CITED, ACCEPTED, TABLES, TAGGING, PATTERNS, EXPLOITS, SYNTAX, EXTRACT, AUDIO, ESTIMATES, CARBON, ELEC, ELECTRONIC, SENTENCE, MANIPULATION, CHANGES, COLLECTIONS, BUSINESS, TAGGED, FILES, IRREGULARITIES, IMPLICIT, AMBIGUITIES, UNMANAGED, ENRICHED, AUDITORY, JOURNALS, SOLUTIONS, UNSTRUCTURED, RELATIONAL, ANALYSTS, REFERS, INVOLVE, POTENTIALLY, ANALYZING.

# DATA DISCOVERY SOLUTIONS



## Specifications

- operates within company network and the cloud
- operate on all environments and file types
- easily deployable and configurable
- resource utilization can be scheduled and maximized
- volumes, velocity, impact
- can utilize different scanning techniques
- has data analytics techniques and can visualize results
- can present discovery results in metadata only
- can demonstrate compliance

## Two types of data discovery solutions:

*Cloud Access Security Brokers (CASB).*

*Endpoint Detection & Response (EDR).*

# DATA DISCOVERY

## Cloud Access Security Brokers (CASB)

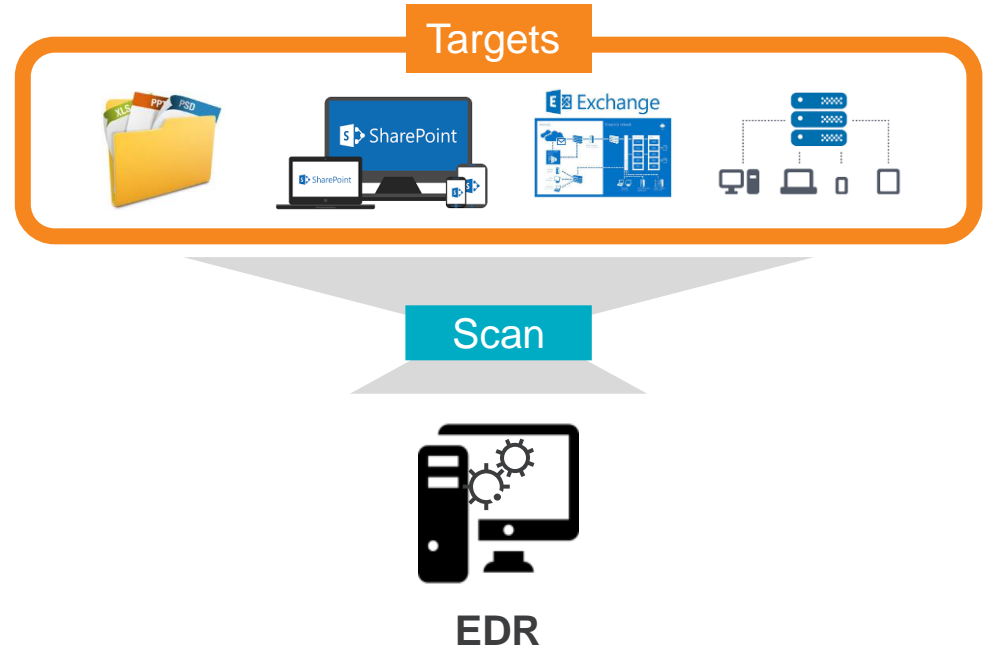
- Monitor network traffic on personal data to cloud applications
- Consolidated view on cloud usage and data transfers
- Fingerprint based
- In-line, SPAN or Replay
- Identify shadow and sanctioned IT
- Enforce data-centric security policies
- Prevent unwanted devices to access cloud services<sup>[1][2]</sup>
- Demonstrate compliance with regulations



# DATA DISCOVERY

## Endpoint Detection & Response (EDR)

- Scans servers, workstations for personal data
- Consolidated Insight where personal data is located
- Requires agents installed on host systems
- Fingerprint based
- Files information on scans centrally for analysis
- Endpoint visibility on malicious activities



# PERSONAL DATA FINGERPRINTS

Information related to an identified or Identifiable natural person ('data subject').

- Full name
- Home address
- Email address
- Social security number
- Passport number
- Driver's license number
- Credit card numbers
- Bank account numbers
- Date of birth
- Telephone number
- Log-in details
- IP Addresses
- MAC addresses
- Curriculum Vitae
- Medical files
- Client identification number
- ....
- ....
- Specific words as well

## Personal Identifiable Information (PII)



# DATA DISCOVERY ASSESSMENT



Discover personal data

# DATA DISCOVERY ASSESSMENT



## Plan

- Select data discovery solutions
- Investigate targets and endpoints
- Investigate on exclusions
- Set fingerprint library
- Agree with Work council
- Draft data clean-up protocol

## Step 1

# DATA DISCOVERY ASSESSMENT

## 2 Prepare



## 1 Plan



### Prepare

- Deploy CASB and EDR
- Prepare targets and endpoints
- Configure fingerprint library
- Configure exclusions
- Trial-run to assess impact
- Investigate on false positives
- Refine data clean-up protocol
- Reduce unstructured data
- Determine final planning

## Step 2



# DATA DISCOVERY ASSESSMENT

## 2 Prepare



## 3 Scan



## 1 Plan

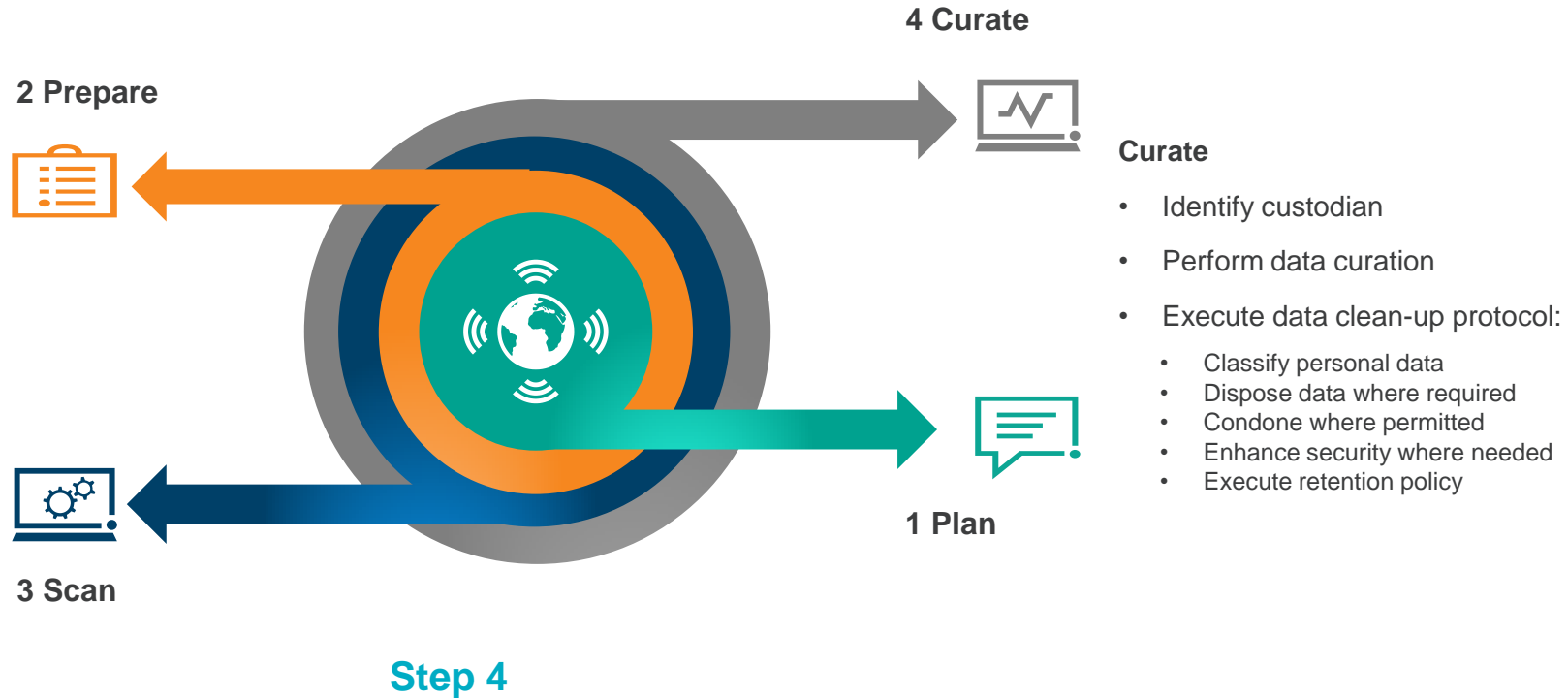


### Scan

- Perform CASB analysis
- Perform agent-based scan
- Analyze data discovery results
- Investigate on last false positives
- Agree on data discovery outcomes
- Draft data discovery report

Step 3

# DATA DISCOVERY ASSESSMENT



*Face the Future with Confidence*